



THE SPECIALISTS OF
ABRASIVES TOOLS
IN OIL & GAS INDUSTRY




GLOBE
 **MADE IN ITALY**



YOUR ABRASIVE PARTNER FOR OIL & GAS INDUSTRY

For more than 40 years GLOBE is present in OIL & GAS industry with specific abrasive products for general and specialized applications. GLOBE offers a complete range of products for every kind of OIL & GAS application such as pipelines constructions, onshore and offshore installations, pipes and vessels manufacturing, maintenance and overhauling. Starting the distribution of abrasives in U.S. and Canadian oil extraction and refining plants during the late 60's, GLOBE extended its market to North Sea plants and more recently in all the Persian Gulf countries (GCC) building up a wide know-how and high specialization in dedicated solutions.

The GLOBE OIL & GAS range includes:



PATENTED



TYPE 41

NEW PIPELINER

*Specifically designed for pipeline construction
Double grooved surface
Extremely fast
Deeper cut
Long durability
Cost saving*



TYPE 42

PIPELINER

*Outstanding performance in pipeline construction
Long durability
Cost saving*



PATENTED



TYPE 29

NEW TURBOTWISTER

*Two operations -grinding and finishing- in a single pass
Flexibility
Fast removal
Excellent finishing*

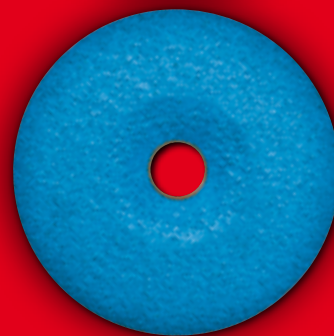
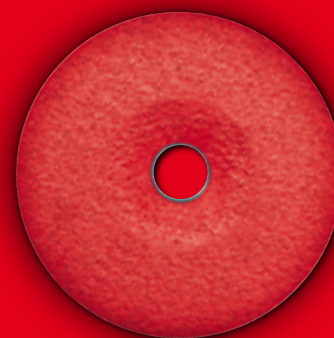


FLEXCELLENCE

FLEXCELLENCE EXTRA

FLEXCELLENCE

*Semiflexible depressed center fiberdisc with integrated backing pad
Work precision
Reduction of working times
Quick and easy assembly
Time and energy saving
Less vibration and less noise
Greater comfort of use*



PATENTED



TYPE 27

GRIND POWER III

*Very high removal capacity on all materials
Reduction of working times -and costs-
Increased productivity and efficiency
Reduction of exposure to vibrations and noise
Maximum comfort of use
Less effort*



TYPE 41



TYPE 42

POWER CUTTERS

*Cutting discs for stationary machines
Wide range of diameters (300 to 800 mm), thickness (2,5 to 9 mm) and bore sizes
Different specifications
Perfect balancing to reduce vibrations*



TYPE 1

TYPE 1

*Internal grinding of pipes
Long life
Suitable for heavy-duty applications
Cold grinding*



OVER NOTCHING AND WELDING PREPARATION



FLAT WHEELS FOR CUTTING AND GRINDING PIPELINES

WORKABLE MATERIALS:



Steel and stainless steel

DIAMETERS (mm): 115 - 125 - 150 - 180

THICKNESS (mm): 4,0 - 4,5



NEW PIPELINER



PATENTED

The NEW PIPELINER is our latest innovation in the field of Oil & Gas industry, developed for pipes fitting, notching and welding preparation. It features a patented double grooved surface on both sides which makes it very fast and creates a very efficient air circulation that cools the metal preventing overheating. The flat shape combined with the double grooved sides allow to penetrate more deeply into the piece.

- Intermittent light grinding, facing, beveling
- Pipeline - beveling, light grinding, notching and cleaning weld beads
- Pipes fitting
- Welding preparation
- Extremely fast
- Cold grinding



SEMI-FLEXIBLE GRINDING WHEELS



SEMIFLEXIBLE WHEELS FOR PORTABLE ANGLE GRINDERS

WORKABLE MATERIALS:



Steel and stainless steel (Fe, S, Cl free)

DIAMETERS (mm): 115 - 125 - 180

GRITS (Mesh): 36 - 60 - 80 - 120



FLEXCELLENCE



FLEXCELLENCE EXTRA



FLEXCELLENCE and FLEXCELLENCE EXTRA are the innovative semiflexible depressed center fiberdisc with built-in backing pad designed by GLOBE for a more PRECISE, FASTER and COMFORTABLE grinding of: welding seams, sharp edges, flat and curved surfaces (convex and concave) and removal of imperfections.

PRECISION: the calibrated flexibility of FLEXCELLENCE and FLEXCELLENCE EXTRA allow extremely precise works compared to standard grinding wheels and allows to work exactly where needed, without affecting the surrounding areas.

SPEED: the formulation of ceramic abrasive grains and special cooling fillers allows an extremely quick material removal without overheating and pitting of the workpiece.

EASY ASSEMBLY: thanks to the built-in support which eliminates the inconvenience of the traditional backing pad, FLEXCELLENCE and FLEXCELLENCE EXTRA are quickly installed like a standard grinding wheel or flap disc.

COMFORT: this discs are best used with an angle of 10-15° and with their special installation kit, while the special internal shock-absorbing element reduces vibrations and noise making the work less tiring.



Assembly of FLEXCELLENCE with **PLASTIC SPACER**

Assembly of FLEXCELLENCE with special **STEEL FLANGE SET**

To get the best from FLEXCELLENCE and FLEXCELLENCE EXTRA, every package contains a thick flange (SPACER) specifically designed to position the wheel closer to the grinder safety guard profile allowing also flat grinding. For even more professional users GLOBE supplies a special STEEL FLANGE SET that fits to all the grinders existing on the market and optimize the disc positioning.



EXCELLENT ABRASIVE CAPACITY



LOW VIBRATIONS



COSTS REDUCTION



LOW NOISE



NOTCHING PREPARATION WHEELS



TYPE 42

DEPRESSED CENTER WHEELS FOR CUTTING PIPELINES

WORKABLE MATERIALS:



Steel and stainless steel



Stainless steel (Fe, S, Cl free)

DIAMETERS (mm): 115 - 125 - 150 - 180

THICKNESS (mm): 2,5 - 3,5 - 4,2



PIPELINER



PIPELINER is the cutting, grinding and beveling range designed for pipes fitting, notching and welding preparation.

These discs are specially conceived and reinforced for grinding joint welds between passes in pipeline construction. Free from iron, sulphur or chlorine (Fe, S, Cl), they do not contaminate stainless steel.

For more than 40 years GLOBE is supplying the OIL & GAS industry with specific abrasive products for general and special applications. GLOBE offers a full range of products for every kind of OIL & GAS applications such as pipelines constructions, onshore and offshore installations, pipe and vessel manufacturing, maintenance and overhauling.

- Intermittent light grinding, facing, beveling
- Pipeline - beveling, light grinding, notching and cleaning weld beads
- Pipes fitting
- Welding preparation



SEMI-FLEXIBLE GRINDING WHEELS



TYPE 29

SEMIFLEXIBLE WHEELS FOR PORTABLE ANGLE GRINDERS



New TURBOTWISTER

WORKABLE MATERIALS:



Steel and stainless steel (Fe, S, Cl free)



Aluminium and other metals



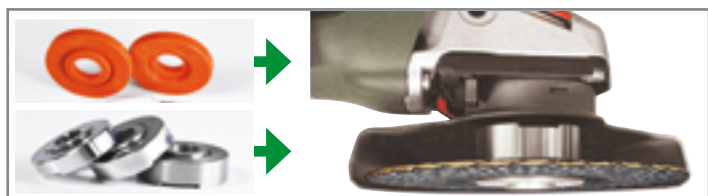
Stone and fibreglass

DIAMETERS (mm): 75 - 115 - 125 - 150 - 180

GRITS (Mesh): 24 - 36 - 60 - 100

THE SPECIAL THICK BACK FLANGES DESIGNED BY GLOBE

They allow (in the respect of all the safety regulations) a more comfortable and precise grinding work, besides improving the disc performance.



2 ≠ SPACERS by GLOBE

Flush mounting with the special GLOBE flanges



THE SPECIAL SURFACE COVERED BY RAISED GROOVES, GUARANTEES GREATER POWER ON ALL METALS.

The patented spiral grooves of the grinding surface create a very effective air circulation which cools metal and prevents overheating. The 3 mm deep pyramidal grooves give high and constant removal speed on all materials.



TURBOTWISTER is the semi-flexible wheel, covered by patent, for grinding and finishing of internal and external curved surfaces, characterized by a working surface with rhomboidal grooves that increase removal rate and create a cooling effect thanks to air circulation through the grooves. The specification for metal, free from iron, sulphur and chlorine compounds, is also suitable for stainless steel. The large contact area guarantees an excellent planarity of the surface treated.

- Fast removal of welding burrs
- Grinding of flat, concave and convex surfaces
- Finishing of castings of any shape
- Grinding of stainless steel without overheating
- Works where a standard abrasive wheel would cause deep incisions
- Removal of welding drops and joints without damaging the surrounding metal
- Patented spiral grooving of the grinding surface creates a very efficient air circulation that cools the metal preventing overheating
- The 3mm deep truncated pyramid grooving gives high and constant removal rate on all materials
- Triple fiberglass reinforcement ensures the maximum safety in every condition



FAST AND HEAVY DUTY GRINDING WHEELS



TYPE 27

DEPRESSED CENTER WHEELS FOR PORTABLE ANGLE GRINDERS



EXCELLENT ABRASIVE
CAPACITY



LOW
VIBRATIONS



COSTS
REDUCTION



LOW NOISE



GRINDPOWER III

Used with grinders of suitable power (1400W for Ø 115 a 125mm) GRIND POWER III is able to cut working times by 50%.

WORKABLE MATERIALS:



Steel and
stainless steel



Steel



Stainless steel
(Fe, S, Cl free)



Cast Iron

DIAMETERS (mm): 115 - 125 - 150 - 180 - 230

THICKNESS (mm): 7,0

PATENTED



✓ LESS VIBRATION
✓ MORE COMFORT
✓ LESS EFFORT



ANTI-VIBRATION INSERT



GRIND POWER III è la soluzione tecnologica GLOBE più avanzata e ineguagliabile per l'industria della rettifica professionale. La miscela di alluminio allo zirconio d'altissima qualità offre velocità d'asportazione e durata senza eguali competendo alla pari con le molto più costose mole ceramiche. Inoltre, la formula priva di Fe, S e Cl rende il prodotto adatto anche all'inox. La maggior innovazione di GRIND POWER III sta nello speciale inserto antivibrazioni incorporato nella mola (tecnologia brevettata) che riduce le vibrazioni trasmesse alle smerigliatrici e agli arti dell'operatore). In un mondo in cui l'attenzione alla salute sono sempre più importanti, GLOBE offre uno strumento pratico per migliorare le condizioni di lavoro, elevando il comfort di utilizzo a livelli mai raggiunti prima. Grazie a GRIND POWER III, il lavoro diventa più veloce, più efficiente, meno faticoso, meno stressante e quindi più vantaggioso.

INTERNAL GRINDING WHEELS



TYPE 1

GRINDING FLAT DISCS FOR STRAIGHT MACHINES



TYPE 1

WORKABLE MATERIALS:



Steel and
stainless steel



Stainless steel
(Fe, S, Cl free)

DIAMETERS (mm): 50 - 75 - 100 - 125

THICKNESS (mm): 8,0 - 12,0 - 20,0 - 25,0



The ideal tool specifically designed for grinding and cleaning internal surfaces of pipes, valves and joints in OIL&GAS Industry. They are extremely balanced to prevent fluttering and to ensure maximum control during operation. Great care is taken in balancing these wheels to prevent vibrations and to ensure maximum control by the operator. These wheels are manufactured with specifications for use at 45m/s (without reinforcements) and for use at 60 and 80m/s (reinforced). Thanks to the special mixture, a high removal rate is achieved without overheating the workpiece.

POWER CUTTERS Ø > 300mm



TYPE 41



TYPE 41



TYPE 42

CUTTING DISCS FOR STATIONARY MACHINES



POWERCUTTER

WORKABLE MATERIALS:



Steel and
stainless steel



Steel



Stainless steel
(Fe, S, Cl free)



Stone

DIAMETERS (mm): 300 - 350 - 400 - 500 - 600 - 700 - 800

THICKNESS (mm): 2,5 - 3,0 - 3,2 - 4,0 - 4,5 - 5,0 - 7,0 - 8,0 - 9,0



We produce a wide variety of hardness grades, diameters, thickness and bore sizes, peripheral speed in order to adapt to every kind of existing machine. We can realize also customized discs for any customer need.



Scan the QRcode on the label of the disc
in order to access the safety information
of the product on GLOBE website.

GLOBE also offers a complete range of abrasive products for any kind of industry:

metal constructions and building industry

food and pharmaceutical machineries

foundry

automotive and railways constructions

furniture industry

... and more



INDUSTRIA ABRASIVI PARMENSE-GLOBE s.r.l.

Via La Spezia, 160 - 43126 Parma - Italy

Tel. +39.0521.293943 - Fax. +39.0521.293743

export@globeabrasives.com

www.globeabrasives.com

